



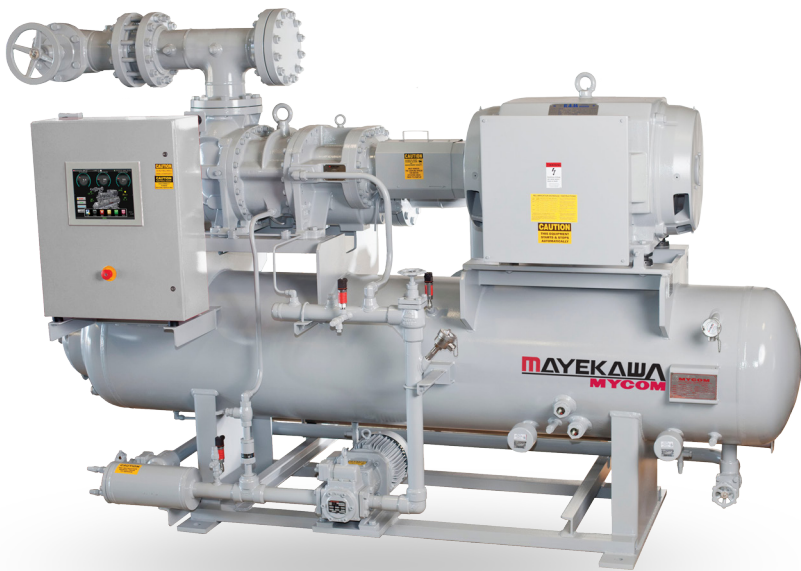
SU

**Screw
Compressor
Package**

SU

Screw Compressor Packages

Two Compressors, One Family.



FLEXIBLE DESIGN

The New MYCOM screw compressor package uses an improved layout and manufacturing methods to assemble the two premier refrigeration compressors on the market, the MYCOM J and V series. The new package can meet any demanding application providing energy efficiency and traditional MYCOM reliability.

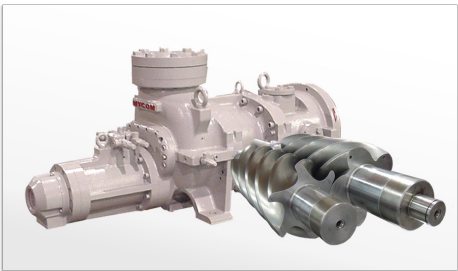
STANDARD FEATURES

- Refrigeration solutions from 413m³/h to 3,190m³/h (large displacement compressors are available)
- High efficiency MYCOM compressors
- Common oil separator design for both V and J series compressors to reduce lead times
- Hydraulic slide valve to match system load
- Variable or adjustable Vi for energy savings
- Options for water, thermosyphon, and liquid injection oil cooling
- MYPRO Touch control panel

OPTIONAL FEATURES

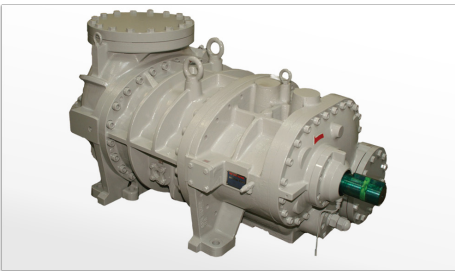
- VFD capable motors and starters
- PLC control panel solution
- Oversized oil separators for low condensing temperatures
- NEMA4 for outdoor applications
- Mounted shell/tube economizer
- Economizer valve train for side load applications

THE COMPRESSORS



J-SERIES

- Completely new design provides more displacement for less kW. It is up to 13.9% more efficient than conventional screw compressors.
- World renowned MYCOM screw reliability
- Auto Vi from 2.5 to 5.0
- Infinite slide valve allows load and unload control from 25% to 100%.
- J-profile rotor for superior performance



V-SERIES

- Durable, reliable compressor that has built a reputation of trust from compressor users over decades
- Models from 160mm (414m³/h) to 320mm (4,737m³/h)
- Available for booster duty
- Manually adjustable Vi from 2.6 to 5.8 (2.2 to 5.0 as an option)

ECONOMIZING

All MYCOM screw compressors have an optional economizing port. This port may be used to equip an economizer increasing efficiency and delivering subcooled liquid to your plant, or may be used to take a side load from another plant load. Use of the economizer port is like having wo compressors in one and increases your system efficiency.

OIL PUMP



When applications require it, the compressor package may be fitted with a MYCOM oil pump. The screw rotor MYCOM oil pump is suitable for continuous or demand duty in all screw pressure regulating valve can bypass up to 50% flow and eliminates the need for external bypass piping.

MYPRO TOUCH

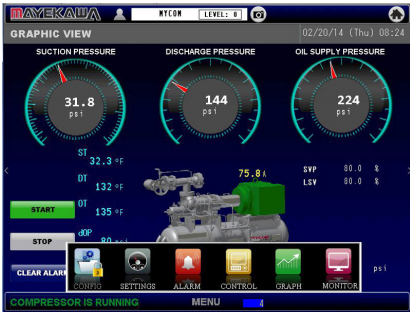
The next generation MYPRO Touch panel is designed to maximize the performance of your MYCOM compressor package. The new touch screen interface boasts a revised control designed to minimize learning curve of a new control panel.

Standard Features

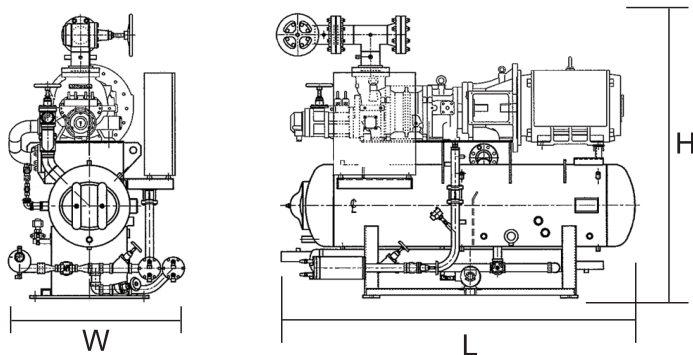
- USB connection
- Ethernet connectivity
- Modbus RTU protocol with standard remote control capabilities
- Password protection
- Available SD card storage
- Expandable system control

Optional Features

- Main status set points monitor available at any controller screen
- SSR I/O switch type
- Real time and Historical trending
- Programmable ID for optional analog inputs
- Calibration menu
- Class I, Div.2 option available



DIMENSIONS & DISPLACEMENT CHART



COMPRESSOR MODEL	Displacement at 50Hz (m³/h)	Length (mm)	Width (mm)	Height (H)	Weight (kg)
170JS	390	2676	1425	2060	2585
160VS	414	2950	1425	2035	2225
170JM	506	2670	1425	2060	2815
160VM	518	2950	1425	2035	2360
160VL	622	2820	1375	2060	2360
170JL	659	2670	1425	2110	2910
200VS	810	3200	1450	2340	2950
220JS	856	3200	1450	2290	3950
200VM	1015	3305	1450	2210	3130
220JM	1113	3585	1810	2465	4630
200VL	1213	3585	1810	2420	3765
220JL	1447	3635	1810	2540	4900
250VS	1575	3735	1655	2595	4585
280JS	1886	4295	1985	2975	7575
250VM	1981	4295	2085	2820	6715
280JM	2450	4345	1985	3045	8390
250VL	2363	4395	2085	2925	7170
280JL	3190	4700	2210	3230	9710

The table shows reference diemnsions with Thermosiphon oil cooler. Water cooled oil cooler and liquid injection oil cooler are available.



The information contained herein is for reference only. Subject to change without notice.



Mayekawa Australia PTY. LTD.

Unit 2, 44 McCauley Street, Matraville NSW 2036, Australia
Tel : (61) 2-9695-7000
Fax : (61) 2-9695-7001
www.mayekawa.com.au

Auckland (New Zealand) Office

Unit 2, 30Tui Street, Atahuhu, Auckland 2024, New Zealand
Tel : (64) 9-276-2305
Fax : (64) 9-276-2306